

Reference Collection

The reference section is always a good starting point for your research. It is located on the ground floor of the library. Here you will find **encyclopaedias, directories and atlases** etc. These works will give you information on virtually every topic and will direct you to other sources. Examples of Reference material:

The Dictionary of Art / Turner

International Dictionary of Films & Filmmakers

Art Theses

Diploma and Degree in Art theses are held in the library since 1981. These may be studied in the library but cannot be borrowed.

Library Staff

Carmel Kavanagh
Teresa Kennedy
Leighton Turner
Tel: 091-745409

Barbara Faherty
Tel: 091-742790

Porter: P. J. O'Donnell

Other Library Services

Available from Main Campus, Dublin Road,
Galway
Tel: 091-742785

Borrowing

The College ID card is also your Library card.

General Stock

Students may borrow 5 books from general stock for a period of one week.

Desk Reserve

Items in heavy demand are put on Desk Reserve and are located at the Library desk. These can only be used in the Library for a maximum of three hours at a time.

Short Loan

Books marked "1 Day Loan" may be borrowed for any 24-hour period or over a weekend.

Fines for Overdue Items

General Stock	20c per day
1-Day Loan	20c per hour
Desk Reserve	50c per hour

OPENING HOURS

Monday	9.30 – 19.30
Tuesday & Wednesday	9.30 – 18.00
Thursday	9.30 - 21.00
Friday	9.30 – 16.00

GMIT Library

GMIT Art Library
Cluain Mhuire
Monivea Road
Galway

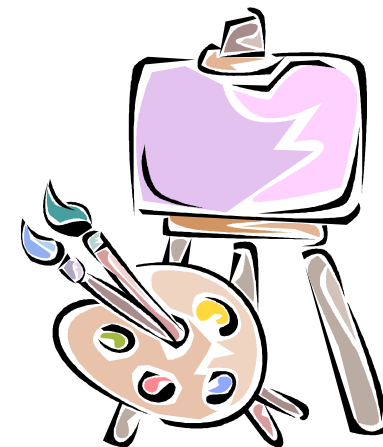
Phone: 091 745409
Email: library@gmit.ie
Website: <http://library.gmit.ie>

Sail logo © Murray O'Laoire Architects

GMIT Library

CLUAIN MHUIRE
School of Humanities

**Department of Art & Design/
Film & Television**



Welcome to the Art Library. This guide gives a brief introduction to the facilities available in the library. The library has seating for 150 readers, a book-stock of about 17,000 volumes and subscribes to over 60 journals. We also hold a good selection of DVDs & videos relating to art and film (many available for overnight loan).

How do I find the information I want?

BOOKS



All books are arranged on the shelves according to the Dewey Decimal Classification System. This means that books are grouped together according to subject and shelved in numerical order.

The following Dewey numbers relate to some **Art and Design subjects**:

Sculpture (730)	Film (791)
Painters (759)	Print (760)
Textiles (746)	

JOURNALS



Journals are an excellent source of up-to-date information on various topics. The library holds both a printed and an electronic collection of journals.

• **Print**

The art library subscribes to over 60 print journals. Current journals are available on open access and shelved in alphabetical order according to title. Back issues of some journals are bound.

Some useful journals in the Art and Design/Film & Television subject area are:

Crafts

Modern Painters

Textile Forum

• **Online Journals**

Online versions are available for many of the printed journals by following the link on the catalogue record to the online version. In addition thousands of online journals are available via the databases.

ELECTRONIC RESOURCES



• **Databases**

GMIT library subscribes to a selection of online art and humanities databases. All are available via the Catalogue – <http://library.gmit.ie/screens/edbases.html>

Art Abstracts

Art Abstracts comprises the bibliographic contents of over 370 leading art journals.

Wilson Omnifile

Wilson Omnifile gives electronic access to full text articles, page images, article abstracts and citations from over 4,000 journals.

Academic OneFile & General Onefile

A one-stop source for academic resources, news and periodical articles on a wide range of topics.

• **Ebooks**

Ebrary's Academic Complete Collection offers access to over 50,000 ebooks across most academic subjects.

Use your own library username and password to access these databases.

LIBRARY CATALOGUE

The Millennium catalogue is an online listing of all the materials held in the GMIT Libraries. Available <http://library.gmit.ie>

Cluain Mhuire library Web page is available at:<http://library.gmit.ie/screens/cluainmhuire.html>. Here you will find useful links to electronic resources, library guides or other library catalogues.

Reservations

Items that are on loan or that are held in other campuses (Castlebar, Galway & Letterfrack) may be reserved by completing a request form @ the desk or online. On its return to the Library, the item will be held for you for 3 days.

Inter-Library Loans

Books or journal articles that are not held in our library (or one of our campuses) can be obtained by using our Inter-Library Loan service. The cost for students is €8 per item.

Photocopying & Printing Facilities

There is one colour photocopier and one black in white copier in the library. Colour photocopying costs 60c per copy. You can buy your copy card from the card dispenser in the library.

All copying must comply with Copyright legislation.